



Ties and Rails

Official newsletter of the Crossville Model Railroad Club
and Div. 16, Southeast Region, NMRA

January 2023

(931)210-5050

www.crossvilletrains.org

The Prez. Sez:

Hi everyone! I hope you all had a nice Christmas in spite of the extreme cold. I have not seen cold this bad since I was stationed up north in Alaska. I am looking forward to our warming trend.

I want to thank Mike Ferry for his work

Lights Out!

Submitted by Ann Grogitsky

I thought that members would like to know that our Christmas Special "Lights Out" event, our turnout was disappointing in 2 ways. We had fewer people attend but those that did come, mentioned that they appreciated us being open those extra hours and they stayed for a long time.

The other disappointment was the lack of Club support. NOT ONE club member came either night to support the 3 club members who worked both nights (Ralph, Jim and Ann).

Friday we had 37 guests and Saturday we had 30 guests. We had good donations both nights.

on getting the Christmas dinner set up at Lake Tansi again. I think we should do it again next year. We will address that at the next member meeting. I think the food and setting were great .

I wish to welcome all of our new members to our organization, or as some prefer to call it, "our Club".

We are going to start having our Board of Directors meeting he Monday prior to the members meeting. That will keep us from being in a hurry to get the Board meeting over with.

We are going to get back to having members bring some kind of snack to the member meeting. We used to do this until everything got out of synch because of COVID. Expect a call from Ann.

We all need to thank those members who put in a lot of extra effort for the Club. Please step up and volunteer some of your time.

Well, hope the new year is a better one.

If you have something you wish to put in the newsletter, contact Tom Shallcross at chipmonk4@comcast.net

Save the Date!
Central Railway Museum's
Model Train
Expo 2023



Fri – Feb 17th 12:00 – 6:00 pm
Sat – Feb 18th 9:00 – 3:00 pm

Rock Springs Church – Impact Center
207 Rock Springs Road
Easley, South Carolina 29642

Admission \$8.00 Adults
Under 10 **Free** with adult
Admission good both days

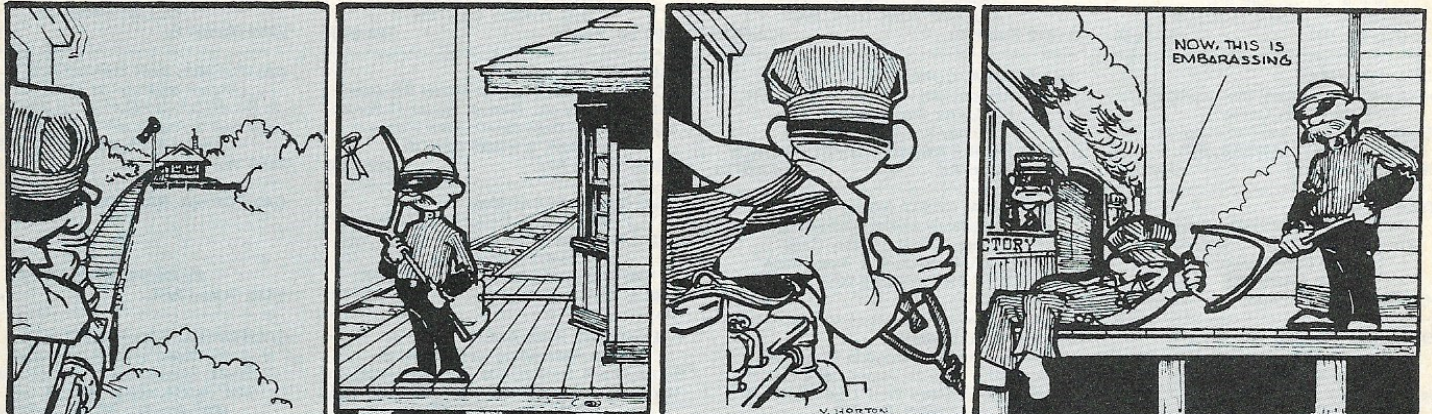
Operating Model Railroads
KidZone
with Thomas & Brio
150+ Dealer Tables

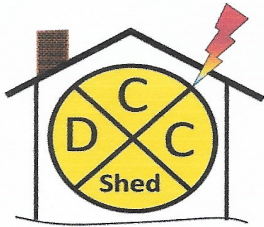


COMPLETE INFO AT: WWW.CRMHA.ORG

Contact Eddy Crowe – (334) 435-2220 elcrowe53@gmail.com
Or Tom Langdale – (803) 960-1246 tlangdale@lowcountry.com

Tyson Rayles





The DCC Shed @ CMRC

Paul Falk

Art Landrigan

Welcome to the Shed. Happy New Year!

We regularly hear questions about upgrading a DC loco by adding a DCC decoder. Even before the conversation about how to do it to a loco, lets discuss some requirements to consider.

First, if you have a DC loco that runs well at all speeds, it is definitely a good candidate for DCC conversion. A poor runner needs a trip through the maintenance process to see if it can be made to run better. Adding a DCC decoder to a poor runner will not improve it mechanically.

Second, the style of the locos power train does impact some of the qualities you look for in a good candidate. Ex. five pole motors (usually preferred) vs. three pole, fly wheels in the power train (always a plus) and a gear train that runs quietly.

Third, who is doing the conversion. This talks to the skills needed to install the decoder. The range of the skills needed is quite large.

For instance, many newer models are "DCC Ready". Some of these don't even need tools. The shell is removed with your thumb-

nails and you plug in the decoder to an empty socket. Others might need to replace a light board with a decoder made for that specific model.

At the far end are the decoder types not built for a specific loco. They will often need re-wiring and maybe chassis modifications just to make room for the decoder.

All of this just adds a decoder that operated the motor and the lights.

Want to also add sound? More things to fit into the shell and thus more decision points and skills will be needed. Its good to remember that the upgraded loco will still operate on DC as well as DCC.

The decoder manufacturers have tools on their websites that help with choosing and installing a decoder that will be suited for your loco and your budget.

This is a brief overview of the topic, always refer to the appropriate documentation for whatever decoder you use.

Remember, one-on-one training and

Cont. on page 4

G Scale News

Ted Polczynski

With the cool weather at hand, we plan to troubleshoot some track issues and general maintenance.

May y'all have a great 2023!

News from the NMRA

On November 28th, Plateau Division conducted their annual election. The following individuals were elected for the next two years:

Superintendent— Art Landrigan

Chief Clerk—Tom Shallcross

Director—Richard Morris

These elections take effect on 1/1/23.

With the election of Art as the Superintendent, his first order of business after 1/1/23 will be to appoint an Assistant Superintendent to fill the vacancy created by his election to Supt.

The members present at the meeting decided to have a holiday brunch similar to the one we had last year. It was held 12/19/22 at Shoney's with xx attending. A good time was had by all.

The DCC Shed, cont. from page 3

help is always available. If you experience any unexplained issues with the current DCC installations, HO or N, please document what you have encountered in an E-mail, or a note to Paul or Art. We welcome your interest and comments. Please contact either Art Landrigan (arcy22tn@gmail.com) or Paul Falk (pfalk1@gmail.com) with questions, comments, or ideas.

Visitor's Log

Tom Shallcross

Even though the students are back in school and family traveling has diminished somewhat, we still had 1,623 visitors to the display in the past month. Of those visitors, 171 registered in our visitors log representing the states of AL, AZ, CA, FL, GA, IA, IL, KY, LA, MD, MN, MS, NE, NJ, NY, OH, PA, SC, TN, TX, VA and WA as well as the countries of England, South Africa and Ukraine.

21 of the visiting families were walk-ins, 11 were because of friends recommendations and 5 were because of the signage.

Some of the comments were:

A Johnson City, NY family said that this "was the biggest and best train model display we've ever seen".

The family from the Ukraine said it was "a good place to be with kids".

The family from South Africa said they "liked the IRS joke".

A family from California said "Thank you for the Christmas show".

A family from Fairfield Glade said "Thank you for your wonderful Xmas display".

A family from Kentucky said, "Very interesting. Kept the girls entertained for quite a while."

Two people from Ohio said, "Woohoo".

Operations

Richard Morris

Our next operating session will be Monday, Jan. 16 at 1:00 PM.

We are going to have our usual mix of passenger and freight trains, local turns, yard work and dispatching.

This session we are going to experiment with a revised "instruction sheet" for each train, if you want to try one, or you can continue with the sheets we have been using. The revised ones will be set up to resemble a timetable or timetable extract, providing instructions on where and how the train will proceed, as well as providing a summary of general rules that will apply to your train. In addition, a map will be included if possible. This will be printed on cardstock to provide a more substantial feel.

If you have any questions or want to bid on a specific train listed below, contact Richard Morris before the session.

Trains to Run:

Passenger trains 1 & 2, 31 & 32

Freights 201 and 202

Crossville Turn

Lyall Turn

Golden Valley

Yardmaster and Dispatcher

Marketing Comm. **Ralph Watson**

Happy New Year Everyone!

There are accomplishments in 2022 that we can be proud of and plan to repeat in the coming year.

Thanks to the efforts of dedicated volunteers, we had 2 swap meets, a picnic, a fabulous Christmas party, S.T.E.A.M. open house and Lighting Up Christmas nights.

Looking past the ball drop, we don't want to drop the ball and miss any opportunity to promote our Club and our hobby to local visitors or to the model railroad community regionally, dare I say nationally.

To that end, the Marketing Community will be having meetings:

meet-ing /medING/

1. an assembly of people, especially the members of a society, for discussion

on a more regular basis, a day and time will be selected to accommodate the schedule of as many as want to attend.

Looking forward to hearing from all of you soon.

Did You Know

You're old when a pregnant woman on a train gets up to give you her seat.

Membership

Tom Shallcross

We would like to welcome a wife and husband team, Donna and James Ling, to our membership. They are both "O" scalers and are recent transplants from the Commonwealth of Pennsylvania. Welcome aboard, folks.

Our condolences to John Linton for the recent passing of his wife. Our prayers are with you.

Our prayers are with Al Barnes as he has to deal with a large series of radiation treatments.

At the December Board of Directors meeting, applications for two perspective new members were presented, voted on and accepted. Please welcome Martin Kruiuzenga (N,O) and David Mahan (O) to our membership. Both are residents of Crossville and have received their orientation to all our scale exhibits.

Special Notice

Recently it was discovered that some damage was done to the electronic controls for the turnouts on the HO scale. It appears that the 'blue' table with something on it was pushed under the layout without regard to the controls that were mounted under the layout and damage was done to the controls.

I'm sure it was an accident but the problem is that nobody was told about it so it could be repaired.

I believe I can speak for all the coordinators when I say it would be appreciated if there is a situation where something is damaged and you are aware of it, please let the appropriate coordinator know so they can arrange for repairs to be made. We can't fix things we are not aware of.

Tom Shallcross, Asst. HO Coordinator

Future Model Railroader??



DRAWN BY SANDY DEAN



"Oh, swell. Just what I always wanted: gold Mikado-type locomotive earrings!"

N Scale News

Jan Novack

Our engine inventory is in the best shape ever thanks to Bill Bly's hard work. He is definitely a major contributor to the N scale operation with his special repair expertise. Some engines that we "retired" because of age and use are now back in operation.

The prep work for the revised track plan near the wall is coming along very well (see photos). A couple of more days of clearing the existing track and scenery and we should be able to start on the new revision. As part of the revision, all turnouts will be Tortoise controlled as we continue updating the N scale operation.

Side note: As part of the revision, we will be able to upgrade to larger engines (LOL).



Yard Demolition Underway



Demolition Completed



**The First New Installation
The Larger Engine Upgrade**

My Layout

Submitted by Bruce Herring

A couple of years after Arlene and I got married in 1976, my doctor told me to take up a hobby to reduce my stress. I decided on model railroading, particularly Lionel. I had a large closet stacked floor to ceiling with trains. We lived in an apartment so, except for Christmas, the trains lived in that closet.

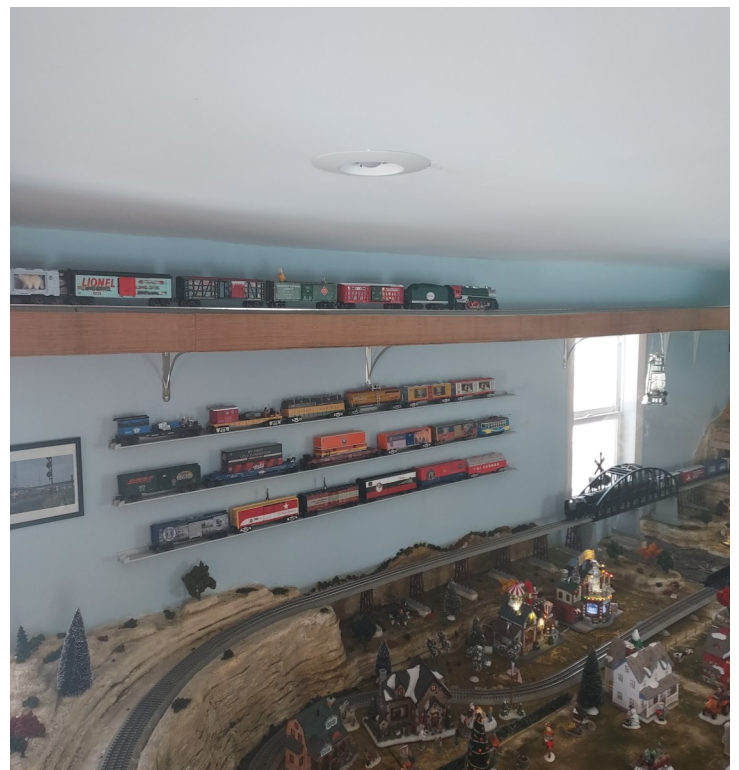
At Christmas time, the whole living room was a rail yard with 6 or 7 trains on sidings available to run around the Christmas tree.

In the early 1980's, we needed to find a new place to live. It was a converted summer cottage, but for a down payment, I had to sell most of my trains. I was down to the bicentennial state car set and a NYC passenger set. Slowly, I began to rebuild my Lionel collection after joining T.T.O.S.

Then in 2001, I took a job with the Federal Reserve in Kansas City, Missouri. Our house there had a massive basement but it was unfinished. With a little help, I had it finisher and ready for use with a TV room, pool table and a workshop area in 2003. Then I started building train tables. I had 10 4x8 ft tables and 6 sets of tracks.

In 2018, I decided to retire and we found our retirement home here in Pikeville,

TN. Problem was, it did not have any room for all those train tables so my trains sat in boxes in the guest bedroom. That is when I started to build my train shed by hand. I am down to 4 sets of track but they stay up all year long now. Here are pics of my 2022 Christmas Village.





O Scale South 2023

8th Annual Atlanta O Scale 2 Rail Meet



9am- 2pm on Saturday February 25, 2023

at the

**Cross of Life Lutheran Church,
1000 Hembree Road, Roswell, GA, USA**



Swap Meet & Modular Layout Display

Layout tours information at the meet

\$5 admission (spouses and children free) / \$25 per 8ft table (includes admission)

<http://www.oscalesouth2023.com>

On3, On30, On2, Proto:48, and 3-Rail Scalers Welcome!



SOUTHERN O SCALERS

**Sponsored by the Southern O Scalers and
the Railroad Model Club of Atlanta**

Contact Dan Mason @ daniel@southemoscalers.com or 770-337-5139 to reserve tables and info

LAW ENFORCEMENT APPRECIATION DAY & TIME OF PRAYER

January 9, 2023

Shepherd of the Hills Lutheran Church


1461 Sparta Hwy
Crossville, TN 38572
931-484-3461



Come pray and show your support for local law enforcement officers. Doors will be open 10AM to NOON on Monday, January 9th.



FREE prayer cards and support ribbons will be given out. There will also be FREE baked goods for all who come. Thank You cards to be sent to local law enforcers will be provided.

- Middle & East TN COPS will be working with the Red Cross for a BLUE BLOOD DRIVE from 9AM to 3PM. 
- Collectable memorial coins that honor law enforcement officers will be available for purchase.
- Corporate prayer at 11AM.
- There will be an opportunity to buy a brick for the new *Veterans & First Responders Memorial* in Fairfield Glade.
- Sign a petition for a new Tennessee license plate honoring the fallen.

American Red Cross

Give blood. Help save lives.



Blue Blood Drive
Sponsored by:
Middle & East Tennessee
C.O.P.S.
at Shepherd of the Hills
Lutheran Church

Fellowship Building
1461 Sparta Hwy
Crossville, TN 38555

Monday, January 9, 2023
9:00 a.m. to 3:00 p.m.

CHAPTER OF CONCERNS OF POLICE SURVIVORS

To schedule an appointment, please visit RedCrossBlood.org and enter sponsor code: BlueBloodDriveCOPS

Streamline your donation experience and save up to 15 minutes by visiting RedCrossBlood.org/RapidPass to complete your pre-donation reading and health history questions on the day of your appointment.



Scan to be directed to RapidPass®

Come give Jan. 1-31 and automatically be entered for a chance to win an exciting trip for you and a guest to Super Bowl LVII in Phoenix! Includes travel, hotel, \$500 gift card, pre-game activities and more! Terms apply; visit RedCrossBlood.org/SuperBowl.



Scan to schedule an appointment.