



Ties and Rails

Official newsletter of the Crossville Model Railroad Club
and Div. 16, Southeast Region, NMRA

July 2019

(931)210-5050

www.crossvilletrains.org

The Prez. Sez:

I understand and deeply appreciate that the railroad Club may be one of many organizations you belong to or support. Free time for some members comes at a real premium. We also have members who live one or two hours away and, thanks to their commitment, they are definitely dependable and loyal members. I recognize the additional cost they invest in drive time.

But the Club needs those who might be able to spare some time to serve on committees or support events which are the backbone of the Club. Thanks to Al Barnes for signing up to cook at the picnic but we need two more to lighten the load. Also thanks to Jim Piersol for taking one of the Audit Committee slots.

There are still plenty of opportunities to serve the Club and I hope, at the July meeting, we can get many of those slots filled. New members - we really need you as you bring a fresh set of eyes and knowledge to the table and would offer a brand new perspective on Club workings that those of us, entrenched in the way "it's always been", might not be so obvious to us old guys.

The signup sheet for the County Fair is on the back bulletin board. Please take a look and select a shift. If everyone signed for just one shift, that would be enough to cover the entire week.

I hope everyone has a great and safe 4th of July.

If you have something you wish to put in the newsletter, contact Tom Shallcross at chipmonk4@comcast.net



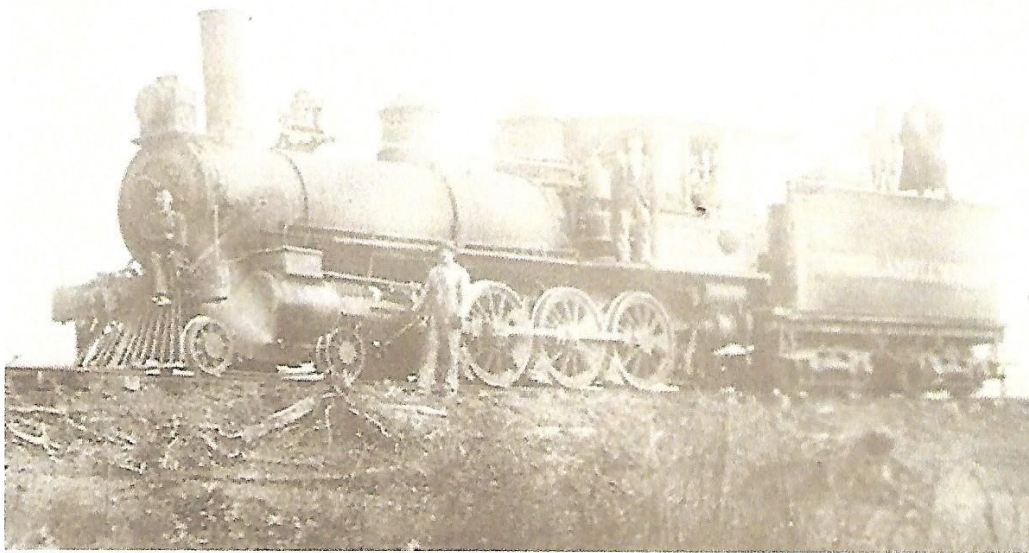
The DCC Shed @ CMRC

Paul Falk

Art Landrigan

This month, Paul and Art decided to forgo their normal Shed article and reprint an article that appeared recently in the Crossville Chronicle regarding a railroad in Cumberland County.

1904: New locomotive pulls first load of lumber



The engine hauls two loaded cars at a trip and delivers 12,000 to 15,000 feet of lumber at Otter Creek Junction each time.

CHRONICLE. March 2, 1904. UNIQUE ROAD Continued. In coming out from the mills the creek hill is very high and as only a 6 percent grade was wanted the road has 2 turns or in other words, runs obliquely with the hill each way until it comes out on top and then takes a generally direct course, with many curves, until North creek is reached within one mile of the railroad. Here again the road zigzags up hill and intersects with the Tennessee Central at camp 30 one-half mile west of Daddys creek bridge.

The highest bridge on this tram road is about 16 feet and 200 feet long; the road passes near several houses but there is not one within sight.

While this meager description does not cover much space, the time required for the completion of the road was about one year, and the contractor, H. T. Pemberton, did not live to see his road completed. His health began to fail in August with a gradual incline to October when he left camp and returned home with very pronounced symptoms of consumption which terminated in death early in May 1903. In the meantime work on the road was steadily progressing and shortly after the death of Mr. Pemberton the engine pulled its first load of lumber through to the railroad at a cost of about \$5,000 for the completion of the road. This estimate covers cost of timber for rails, for labor, etc.

Continued on page 3

Continued from page 2

The locomotive is very unlike a railroad locomotive. The water tank, coal tender, engines and boiler are all on one frame, the boiler is T-shaped; the engine is separate from boiler and geared to a shaft underneath with cog gearing to the wheels—8 in number—all of which are drivers. The upper frame is adjusted by spiral spring to trucks which make it self adjustable to rough and uneven tracks. It is built by the Climax Engine Works, Cory, PA, and cost together with two cars, \$3,700, is a decided success for what it is intended and will enable the company in the course of three or four years to market all their lumber. With teams it would have required more time than I would like to conjecture. The company expects to put another engine on the road and replace the wood rails with steel in the near future.

The engine hauls two loaded cars at a trip and delivers 12,000 to 15,000 feet of lumber at Otter Creek Junction each time. One or two trips a day being made, owing somewhat to the weather. The cost is about \$5.00 a trip, which makes the delivery of the lumber costs from 33 cents to 40 cents per thousand at the T.C. Railroad. The usual price paid teams per thousand was \$3.50, which shows a great saving, aside from the further fact that the tram engine hauls all needed supplies from the railroad to the mills.

A good team could haul from 600 to 1,000 feet at a load and make one trip a day. The company paid 40 cents a hundred to teamsters for hauling supplies from the railroad to the mills. As will be seen, that alone, would almost pay present delivery expenses.

There is an additional expense, however, of two or three men to look after the track and keep it in repair. The company is now extending the road for logging purposes and to reach another mill a few miles beyond the present terminus.

HO Scale News - Paul Falk

Fire

Recently we experienced a 'fire' in a building on the second pier of the HO layout.

Fortunately the local fire department was 'on the scene' in short order and damage was held to a minimum.



Now for the good part. The affected building is the office of the Infernal Revenue Service for Eastern Tennessee and most of their records were affected.

Most adults can appreciate this!

Our visitor statistician, Doyle Winters has finally worked the bugs out of his graph program so now we will be able to play 'catch up' with the visitors demographics, starting this month.

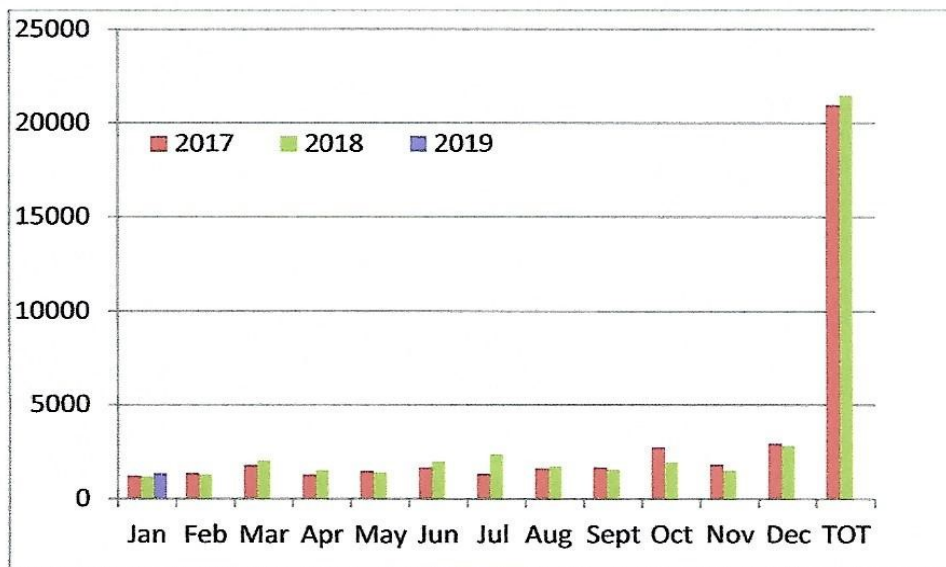
Crossville Model RR Club Visitor Report - January 2019

- Visitors Current Month – 1346 Signed Guest Book – 153

– Sources:

Trip Advisor	3	Face book	1	Website	2
Rack Card	1	Signage	0	Walk-in	56
Friend	5	Other	1		

- 102 Visits from TN (66% of those that signed in)
- Foreign Countries: None
- Remainder were from: CO, FL, GA, IN, KS, KY, MT, NC, NY, OH, TX, WA (12 Different states)
- Comments: "Hidden Gem of Crossville", "Gavin did awesome job showing us this store!"
- **REMINDER: ASK VISITORS TO SIGN IN PLEASE!! Only 11.4% Signed in!**



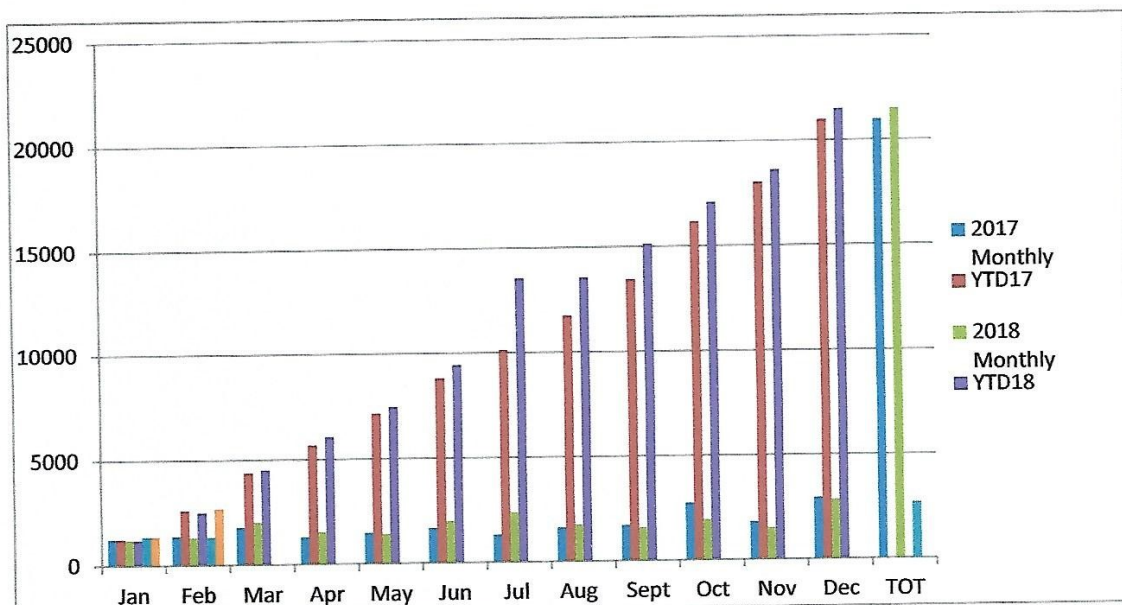
Crossville Model RR Club Visitor Report - February 2019

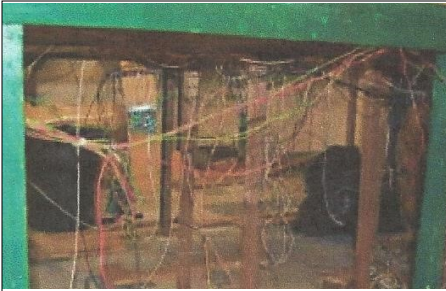
- Visitors Current Month - 1327 Signed Guest Book - 206

- Sources:

Trip Advisor	4	Face book	2	Website	1
Rack Card	5	Signage	0	Walk-in	75
Friend	16	Other	3		

- 65 Visits from TN (31.5% of those that signed in)
- Foreign Countries: Germany
- Remainder were from: AL, AR, CA, FL, GA, IL, KY, LA, MI, MN, NC, NY, PA, OH, OK, VA, (16 Different states)
- Comments: "Great, Awesome, Outstanding, Amazing, Family Friendly!"
- REMINDER: ASK VISITORS TO SIGN IN PLEASE!! Only 11.4% Signed in!



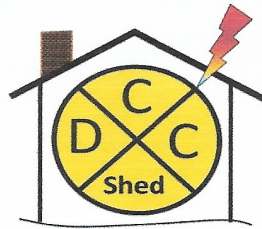


**HO
Upgrade
Project
Tom Shallcross**

Activities for the past month have centered around getting the turntable and roundhouse up an running. At the present time we are about 95% complete and hope to have it completed shortly.

The installation of building lights continues with many of the buildings on the second pier now lighted.

As some of you have noticed, the Infernal Revenue Service building on the second pier has received some 'fire' damage but the local fire department responded and kept damage to a minimum. This has been a big hit with the public.



The DCC Shed @ CMRC

Paul Falk

Art Landrigan

Come on in and get comfortable. Happy Summer, come on in, it's cool in here!

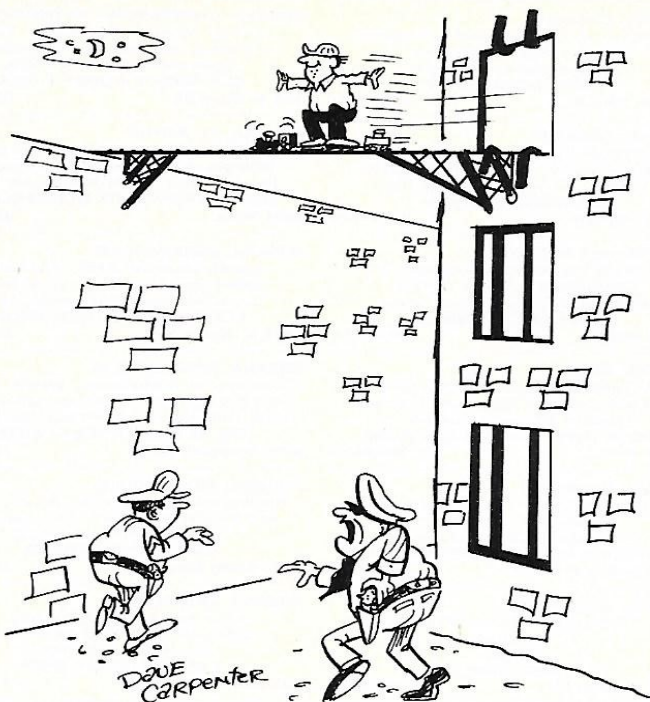
A favorite website we regularly use and recommend highly in The Shed is DCCWiki.com. This site is a wealth of information about the many aspects of DCC for model railroading. DCCWiki is an open source project with a goal to document all aspects of DCC. Lots of honest information without the hype that one often finds on commercial sites.

After a couple of member discussions, I think it's time to talk about DCC myths. Things that are assumed to be true and common knowledge that are just not right.

A couple examples. DCC is AC power. Sound decoders need a lot more power. OR Programming on the main using OPS mode programming is dangerous. Well, the answer to all these is FALSE.

Go to dccwiki.com/DCC Myths for the reasons why and many more.

Remember, one-on-one DCC training is always available, so let us know. We are here to help. If you experience and unexplained issues with the current DCC installations, HO or N, please document what you have encountered in an E-mail, or a note, to Paul and Art. We welcome your interest and comments and feel free to contact either Paul Falk (pfalk1@gmail.com) or Art Landrigan (arcy22tn@gmail.com) with questions, comments or ideas.



"I knew we were getting too lax with Butches layout privileges."

Committees

Recently, President Taylor approached the Club membership to address a problem within the Club where there are numerous Committees that are needed to assist the Club in its operation and continue to have inadequate number of members serving on the committees. He is looking for volunteers to serve on these committees.

If you have any questions about the job or time commitments, please contact Pat for more information.

Picnic Committee - WE need three people to cook the hamburgers and hot dogs during the picnic. Please contact Ann if you can help.

Nominating Committee - One Board member and one other member. It happens once a year and can generally be completed in less than two hours.

Christmas Committee - We need two members to assist the wives who have volunteered. Time commitment likely three to four hours.

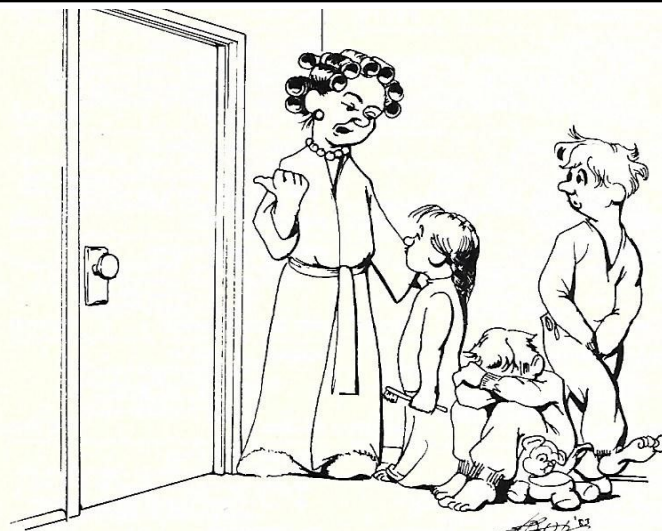
Audit Committee - Meets with the Treasurer and reviews the financial report for the year. Generally takes two to three hours plus typing a report of the findings. A Board member and one other member are needed.

Decorating Committee - Committee handles the decorating of the suite on special occasions, such as Easter, Memorial Day, July 4th, Veterans Day, Halloween, Thanksgiving and Christmas. Need three members to join this group and it only takes an hour for each holiday.

2021 Committee - That is the year we will celebrate the Club's twentieth year in existence. This committee, comprised of at least one Board member,

two members from the Marketing Committee, our PR person and three other members. This committee will be meeting throughout 2020 and likely into 2021. The time commitment is likely fifteen to twenty hours over the next two years. This is a very important milestone for the Club and we need to put together a great schedule of events for the benefit of the Club and our visitors.

Please, we need more members to give that little extra for the benefit of **YOUR** Club.



"We're just going to have to wait . . . his new issue of RMC came yesterday."

Membership

John Conor

The Board of Directors will have at least one new member applicant to consider for July. Additionally there have been several members that have spoken to 2 or 3 other visitors during June, who have expressed interest in joining. We may still hear from them.

We will just have to wait for the business meeting to see how strong our recruitment for the month ends up..

Once again, thank you for your efforts to help grow our Club.

Important Dates in Railroad

History *From NMRA and Southern Railway Historical Society calendars.*



7/1/1894—Southern Railway Company begins operations over Richmond & Danville properties.

7/1/1895—Georgia Southern and Florida Railway is acquired.

7/4/1828—Baltimore & Ohio Railroad lays first stone

7/6/1862—U. S. Congress passes Pacific Railway Act

7/15/1853—Grand Trunk Railway formed

7/15/1916—22 inches of rain fall at Altapass, NC in 24 hours.

7/16/1916—Floods damage much of Southern Railway in N.C. and S.C.

Have you ever considered joining the NMRA?

At present there are two ways to join the local Plateau Division #16.

If you area Veteran, thanks to a grant from a fellow modeler, if you have never been a member of the NMRA, you can join for one year at NO CHARGE!

The NMRA also offers a “RAILPASS” which makes you a member for a year at a greatly reduced price.

Either of these methods gives you a chance to see what the NMRA program is all about and a chance to interact with other members with like interests.

If either of these programs interest you, contact Art Landrigan, local Division Membership Chairman, for additional information and appropriate application.



Club Picnic

Our annual picnic will be Monday, August 12 at Camp Nakanawa, locates off 70N.

This is a beautiful camp, locates on Lake Aloaloo, with lots of trees for shade.

You are welcome to come any time after 3:00 PM to enjoy the camp. There will be canoes and paddle boats for your use at no cost.

Be sure to walk over to the library and see the diorama depicting the camp in the 1920's built by us. If you want to see pictures of the camp, go to: camp-nakanawa.com. There will be a map with directions on the bulletin board. The camp's address is 1084 Camp Nakanawa Road' Crossville.

The Club furnishes hamburgers, hot dogs, buns and place settings. You need to bring a dish to pass (serving 8—10 people), your own drinks and your own chairs. A signup sheet is on the bulletin board.

Any questions, call Ann at 788-2613.

Marketing Committee

Art Landrigan

The Marketing Committee met on June 6, 2019 with most members in attendance, including our newest member and PR chair - Bill Bly.

Discussion on suite lighting revealed that the cost of a complete lighting project would be too expensive, and we will postpone this effort pending other less expensive alternatives in upcoming weeks/months. Update to be seen at July's meeting.

Remember to bring your thoughts to the meeting for our upcoming 20th Anniversary ideas, calendar, etc.

The meeting adjourned at approximately 4:45 PM.

The next Marketing Committee meeting is scheduled for Monday, July 1, 2019 at 3:00 PM. If you haven't joined us in the past, why not come and pay us a visit. The only requirement is to bring an idea, or two, and share your thoughts with the Committee.

G Scale News - Ann Grogitsky

The carnival is up and ready for summer visitors.

The red dinosaur is not working and will not be repaired any time soon.

N Scale Drive-In Start Procedures

As we have many new members and because of the long period of time since we last posted these procedures, we thought it may be appropriate for all to review them.

To start the operation of the theater, follow this procedure:

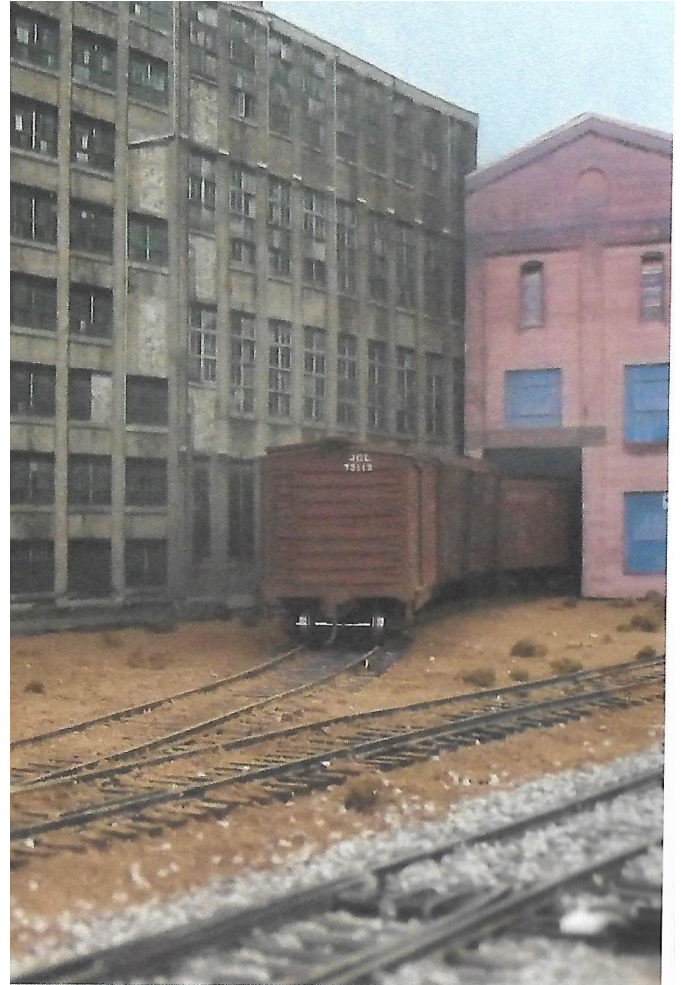
1. Once the track power is turned on, press the "Red On" button on the remote. Be sure the remote is pointed at the DVD player located beneath the Drive-In. Be sure the curtain is pulled back to give you a clear path between the remote and the DVD player.
2. Push the "Play" button and wait until the movie starts.
3. Push the "Repeat" button three times slowly and "Title" will appear on the top left of the screen.

This allows the movie to continue repeatedly until you turn it off at the end of the shift.



"This is the fourth water tower I've built — the bourbon keeps melting the plastic."

Al Westerfield - Many of you may remember a former member, Al Westerfield, that had to move to a warmer weather for medical reasons. When Al was with us, he 'started' the Operations program. He is also the former owner of Westerfield Scale Models. Recently he sent some photos of the new layout he is building in his new home. Some of those photos are shown below.



2019 Madison Train Show

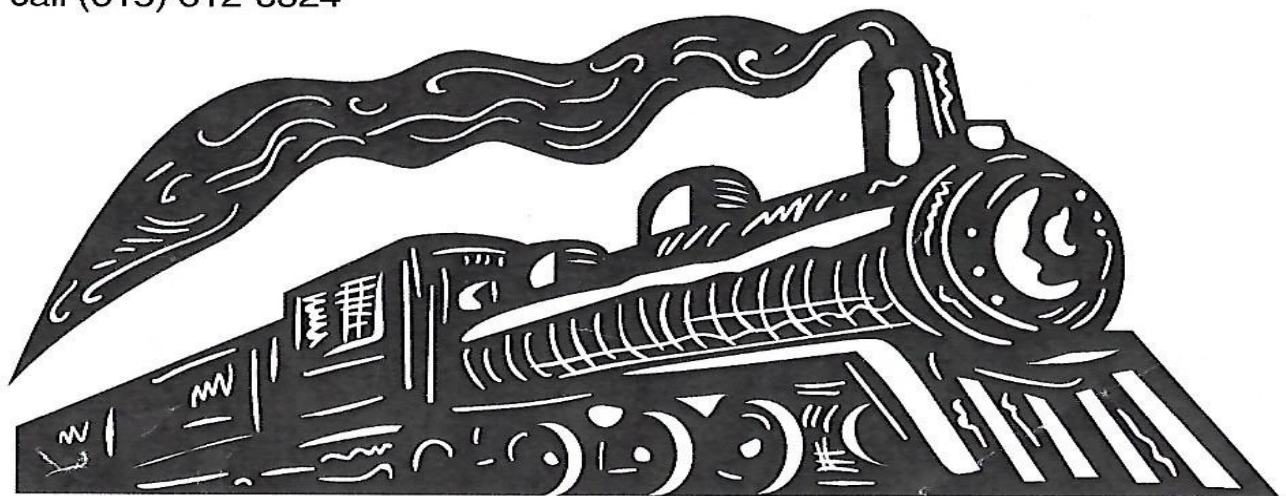
- **Operating Model Trains**
- **Train Supply Vendors**
- **Exhibits**
- **Food**
- **Door Prizes!**

Friday, July 26
2:00 p.m. to 6:00 p.m.
Saturday, July 27
8:00 p.m. to 2:00 p.m.

- **\$ 7 for adults**
- **\$ 3 for children 4-12**
- **Free for 3 and under**

Discount \$1 per one adult with current ID: active duty military, police, fire, EMS & school teachers.

For more information on the event or being a vendor please contact nathanbaker@comcast.net or call (615) 612-3324



701 Gallatin Pike S.
Madison, TN 37115
www.cityroadchapel.org/trainshow

Ties and Rails Calendar

Tennessee Central Railway Museum, 220 Willow Street, Nashville, TN has numerous excursions throughout the year as listed in the calendar. Contact them at 615-241-0436 for specific information regarding any trip.

July 2019	Clean-up	Club	O/G Scales
7/1/19	Marketing Mtg.	Club	3:00 PM
7/1/19	HO Meeting	Club	4:00 PM
7/7-13/19	NMRA Conv.	Salt Lake City, UT	Website: www.nmra2019.org/
7/8/19	BOD Meeting	Club	4:30 PM
7/8/19	Member Mtg.	Suite 112, Crossville Outlet Center	6:00 PM
7/12/19	Visitors	Club	10:30 AM; 22 visitors from Fairfield Glade
7/12-14/19	Train Show	Salt Lake City, UT	National Train Show
7/13/19	Train Trip	220 Willow St., Nashville, TN	Murder Mystery Trip
7/26,27/19	Train Show	701 Gallatin Pike S., Madison, TN	2:00 PM to 6:00 PM (Fri.) and 8:00 AM to 2:00 PM (Sat.); \$7. Adm.
Aug. 2019	Clean-up	Club	HO/N/Z Scales
8/8/19	Marketing Mtg.	Club	4:00 PM
8/10/19	Train Trip	220 Willow St., Nashville, TN	DelMonaco Winery Trip
8/12/19	Club Picnic	Camp Nakanawa	3:00 PM; eat at 5:50 PM
8/31/19	Train Trip	220 Willow St., Nashville, TN	DelMonaco Winery Trip
Sept. 2019	Clean-up	Club	O/G Scales
9/5/19	Marketing Mtg.	Club	4:00 PM
9/7/19	Train Trip	220 Willow St., Nashville, TN	DelMonaco Winery Trip
9/9/19	BOD Meeting	Club	4:30 PM
9/9/19	Member Mtg.	Suite 112, Crossville Outlet Center	6:00 PM
9/28/19	Train Trip	220 Willow St., Nashville, TN	Train Robbery Trip