



Ties and Rails

Official newsletter of the Crossville Model Railroad Club
and Div. 16, Southeast Region, NMRA

June 2019

(931)210-5050

www.crossvilletrains.org

The Prez. Sez: Well, another month with two new members. I'm sure you'll find a picture with their name later in the newsletter. Both are experienced modelers.

It was brought to my attention that the Club used to sponsor membership layout tours but it has not been done for quite a few years. This will be discussed at the June meeting, so if you have a layout at home and would like to sponsor a layout tour, please let me know.

The plan would be to do these in groups like one time in Fairfield Glac and the next time in Tansi.

Again I want to remind all the members of our picnic that's coming up in August. We will be having it at Camp Nakanawa. There are many family-friendly activities to participate in such as swimming, canoeing, paddle boats and fishing just to name a few.

The picnic will start this year at 3 PM instead of the normal 5 PM.

All family members, including children and grandchildren, are welcome to attend.

There will be a sign-up sheet in the back hallway, so please feel free to sign up.

All you need to bring is your liquid refreshment and a dish to pass.

If you have something you wish to put in the newsletter, contact Tom Shallcross at chipmonk4@comcast.net



The DCC Shed @ CMRC

Paul Falk

Art Landrigan

Come on in and get comfortable.

This month we look at things that can cause a decoder to reset. Many of us have had a good running DCC loco seemingly lose its mind. What follows is a brief explanation of a possible reason.

Decoders are small, task specific computers. Whenever they are turned on or restarted, they run through an initialization process. During that process the decoder's operating system compares the current state of the parameters stored in its memory to what was last stored there. This is accomplished using a calculated value called a checksum (beyond our scope here, but feel free to look it up).

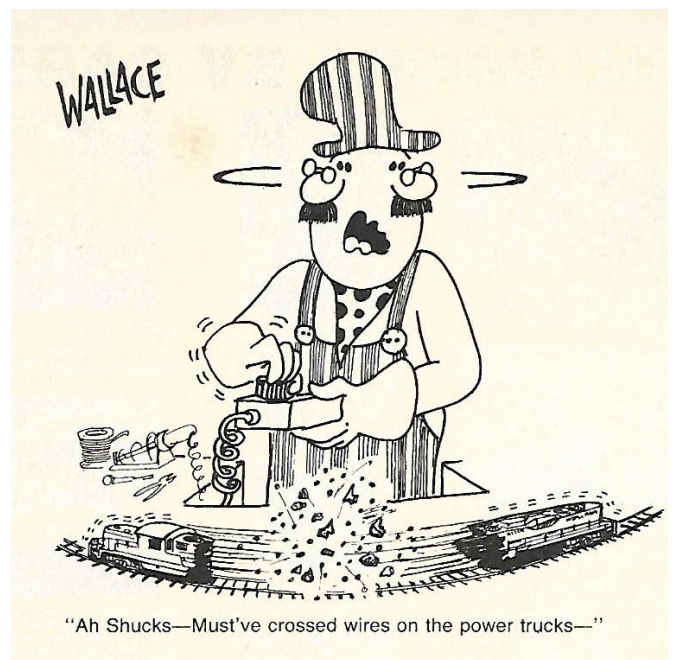
If the current and stored values don't match, bad things happen. In short, this process is done without any warning or user intervention. The checksum only indicates a pass or fail. The decoder cannot determine what the problem(s) are. Its only solution is to clear the memory and reset its values to the factory default. Like when we reset the decoder on purpose.

Two possible solutions can occur that produce this unexpected result. A short circuit can also cause the memory to be scrambled, so when the checksum is done, and it results in *an error*, the decoder software initiates a reset to factory defaults. Anytime you alter a CV, the checksum is recalculated and the result is stored in the decoder's memory, sometimes that value is corrupted. Should the previously calculated checksum be corrupted, the same results will

occur, back to factory defaults.

So be gentle on your decoders, they are only trying to be good.

Remember, one-on-one DCC training is always available, so let us know. We are here to help. If you experience and unexplained issues with the current DCC installations, HO or N, please document what you have encountered in an E-mail, or a note, to Paul and Art. We welcome your interest and comments and feel free to contact either Paul Falk (pfalk1@gmail.com) or Art Landrigan (arcy22tn@gmail.com) with questions, comments or ideas.



Operations Session

June 3rd, 4:00 CDT @ CMRC

All CMRC members are invited

Come and Enjoy



New Members

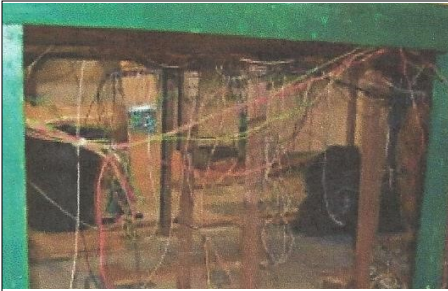
These are two new members to the Club that were voted in at the May monthly general meeting.

If you happen to see them, go up and introduce yourselves and welcome them aboard.

Bill Bly—N Scale

Keith Hendren—HO Scale



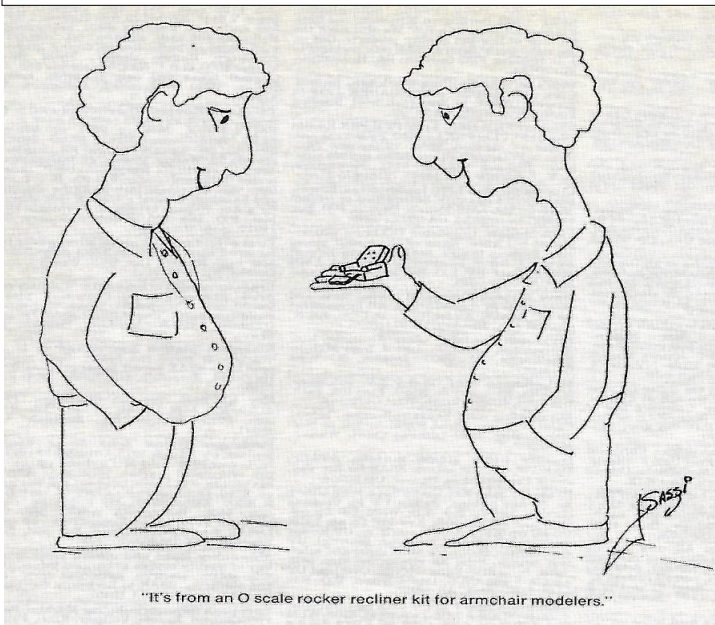


**HO
Upgrade
Project
Tom Shallcross**

During the past month, we have been able to complete the installation of the turnout 'lanterns' in the area of the new yard and engine servicing facility on the fourth pier.

Jack has been installing lights in the various buildings around the yard and we hope to have them operational in the near future.

As we approach the completion of the scenery, etc. on the 'left side' of fourth pier, Paul is looking for ideas as to what can be done on the right side of the fourth pier. If anyone has any ideas of what we could do or what they would like to see, please contact Paul as he plans to start developing a design, along the same lines as the one he did for the yard. We would like to encourage everyone to let their thoughts be known.



"It's from an O scale rocker recliner kit for armchair modelers."

N Scale News - Jan Novack

We had a meeting on May 20th and had an excellent discussion on several topics.

Over the next 2+ months, we hope to complete the window treatments and light diffusion in the buildings around the trolley area.

The circus will be leaving town and as many of the Crossville buildings will be brought out that will fit into that space. The Playhouse will be going over to an area by the wall.

Following that, we will be extending the lighting of buildings in the town area near the brochure rack. Any buildings that need window treatment or light diffusion will be done at that time and we will look at adding street lighting.

The last 3+ months, we hope to start a slight redesign of the yard area next to the control panel and install new switches with Tortoise switch machines. We will start in this area with the Tortoise machines and continue into next year with installing these on all switches on the three main lines.

Through the balance of the year, we hope to acquire 3-4 new engines and take a good look at our rolling stock and weed out any cars that are just not up to grade.

We want to change up what freight cars we use and not have the same cars running week after week.



Operations

Richard Morris

As we prepare for our next operating session on June 3rd, I thought I would prepare a list of the different positions that will have to be filled. If you are interested in filling a specific 'slot', please let me know as soon as possible.

The following positions are available to be run:

Dispatcher — to work with me to assure that all trains are operated on time and on the proper route.

Yardmaster/Hostler (can be separated if we have enough bodies).

Eastbound Passenger - Starts in the west (lower) staging, makes stops at all passenger stations and ends in the passing siding at the upper level.

Westbound Passenger - Starts in a siding at the upper level, makes stops at all passenger sidings and ends in the lower staging yard.

Golden Valley Switcher - Switches industries in Golden Valley.

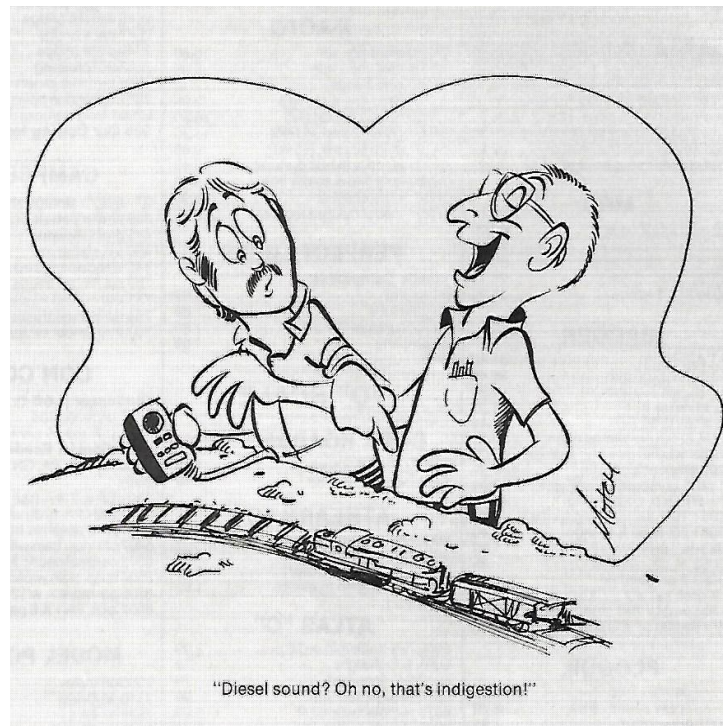
Pine Ridge Junction switcher - Pulls cars at industries and spots them on the passing siding for mainline trains to pick up. Spots cars dropped by mainline trains at appropriate industries at Pine Ridge Junction.

FED-UPS turn - Departs from HoSu Yard with cars to spot at industries at FED-UPS. Delivers and pulls cars and returns to HoSu Yard.

If Operations is something that you think you may be interested in, please stop by and see what we are all about.

If you are a 'newbie' to Operations, please stop by and we can pair you with an experienced engineer.

Hope to see you on the 3rd!



New Neighbors

We have been notified by Mall Management (Chip Reed) that in the near future we will be having new neighbors in the three (yes, that's three) suites across the hall from us, opening 7/1/19.

A lease has been signed by a youth (ages 8 to 18) gymnastics group. Most of their members come in from outside the area so the parents will need something to do while they wait. They also host other activities such as children's parties, etc.

This may be an excellent opportunity to 'encourage' them to visit us and have a positive interaction with us.

Important Dates in Railroad History From NMRA and Southern Railway Historical Society calendars.



6/1/1982—Norfolk and Western Railway and Southern Railway consolidated as Norfolk Southern Corp.

6/13/1919—Canadian National Railways incorporated.

6/16/1953—Official final steam locomotive run on Southern Railway.

6/16/1963—Central of Georgia Railroad is acquired by the Southern Railway

6/18/1894—Southern Railway incorporated

6/26/1964—Bay Area Rapid Transit begins construction.

6/28/1963—Georgia & Florida Railroad acquired by the Southern Railway.

6/30/1977—Last regular RPO service in the U.S. ends.



Southeastern Region Election Results

President—Larry Burkholder—Former Superintendent from Knoxville

Treasurer—Mark McAllister—From Chattanooga Division

Directors—Paul V. Voelker—Former Newsletter Editor, and **Roy Masterson**—Superintendent from Chattanooga

Visitors

Recently, Our Treasurer decided to evaluate the number of visitors we have had on a yearly basis since 2015 as follows:

2015 - 26,321

2016 - 24,120

2017 - 21,972

2018 - 22,813

2019 - 5,860 January thru April

As you can see, the volume of foot traffic over the past 5 years has been dropping although there was a slight increase during 2018.

Donations follow the same pattern which presents a problem. Those donations are what keeps us afloat so I would encourage our members to concentrate their efforts in the interaction with the visitors as much as they possibly can.



Marketing Committee

Art Landrigan

The Marketing Committee met on May 9, 2019 with a great attendance.

The primary discussion for this meeting surrounded the formulation of a recommendation to the CMRC BOD regarding the 'Suite Front Entrance' sign we were asked to investigate some time ago, at Chip's (Mall Manager) request to the CMRC.

Considerable discussion resulted in a recommendation of the type of materials to be used and the type of panels (non-translucent), if the CMRC BOD decided to go ahead with the project. The subject was briefed to the BOD on Monday, May 13th, and was tabled by the board at that time.

On behalf of the Marketing Committee, I must thank the BOD to have the fiscal foresight to place a hold on this project, pending the results of the ongoing application for the 501(c)3 designation currently underway. If successful with the request, CMRC will be able to regain the Interstate signage at a cost which is significantly lower than the State's revised cost, and regain the lost advertisement of the CMRC on the Interstate. The BOD (rightfully so) believes the return on investment with the Interstate signs will be more advantageous to the Club than an additional internal Mall signage effort would be. We just wanted the mem-

bership to realize the actions of the signage issue was reviewed in depth and, in my opinion, the proper decision was made at this time.

The meeting adjourned at approximately 4:45 PM.

The next Marketing Committee meeting is scheduled for Thursday, June 6, 2019 at 4 PM. If you haven't joined us in the past, why not come and pay us a visit. The only requirement is to bring an idea, or two, and share your thoughts with the Committee.

Picnic Time!!

SET THE DATE: August 12. (Monday) will be the Club Picnic.

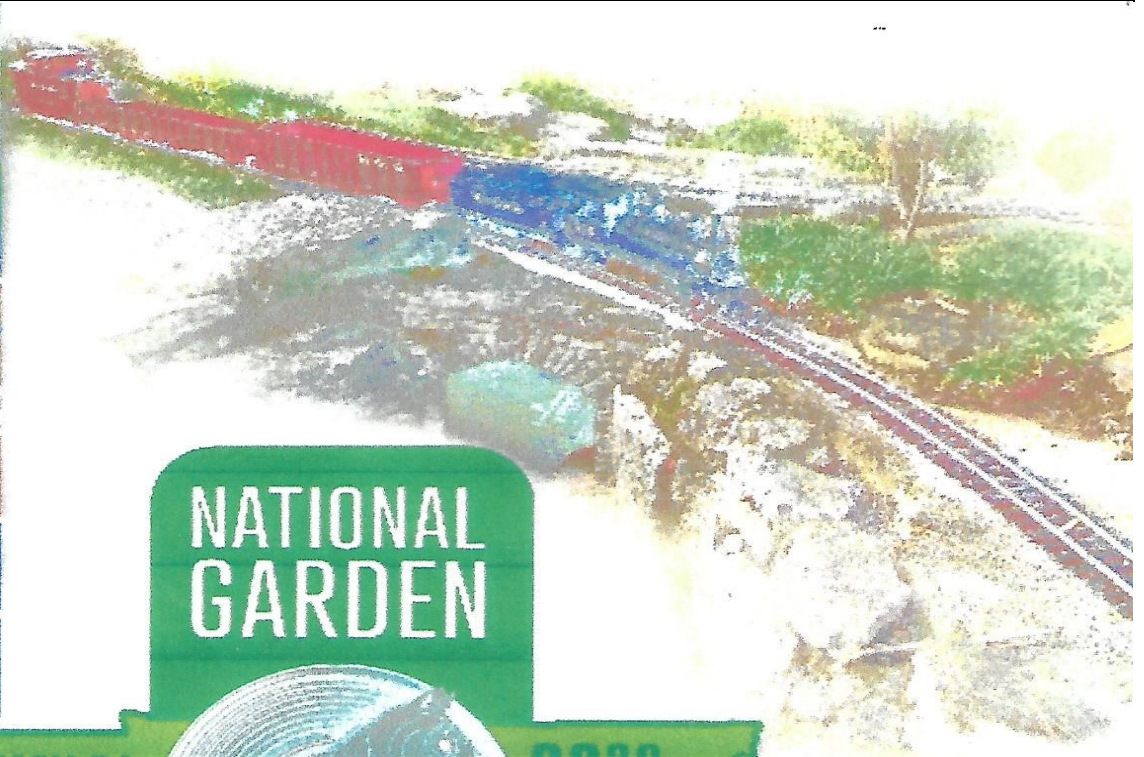
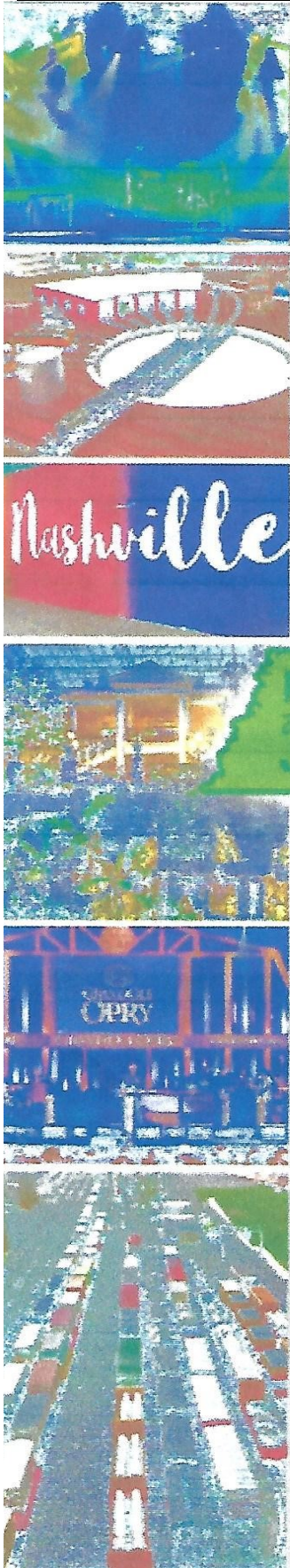
It will be held at Camp Nakanawa in Mayland. This is on a lake and there will be boats and canoes for your use and lots of shade. There is also an HO layout in the library that should be of interest.

The Club provides hamburgers, hot dogs and place settings. You just need to bring a dish to pass (serving around 8-10 people), your own chairs and drinks. Time and directions will be in the July newsletter.

I need 2 cooks!

This is an excellent opportunity to meet other, especially the new, Club members in a setting outside the Suite.

Ann Grogitsky



NATIONAL
GARDEN



MAY 31
through
JUNE 6

2020

RAILWAY
CONVENTION

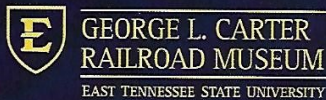
*"Hindsight is 2020.
Don't miss out!"*

Nashville, TN
Gaylord Opryland Resort
May 31– June 6, 2020

36th National Garden Railway Convention
Presented by the Nashville Garden Railway Society

ngrc2020.com

Registration opens June 1st



BIG TRAIN SHOW

Friday - Saturday

May 31 - June 1st 2019

To be held in the ETSU Memorial Center "Mini-Dome" with more than 64,000 square feet of display space.

Hours

Friday: Noon - 6:00 p.m.

Saturday: 10:00 a.m. - 4:00 p.m.

Admission

\$6.00 per day

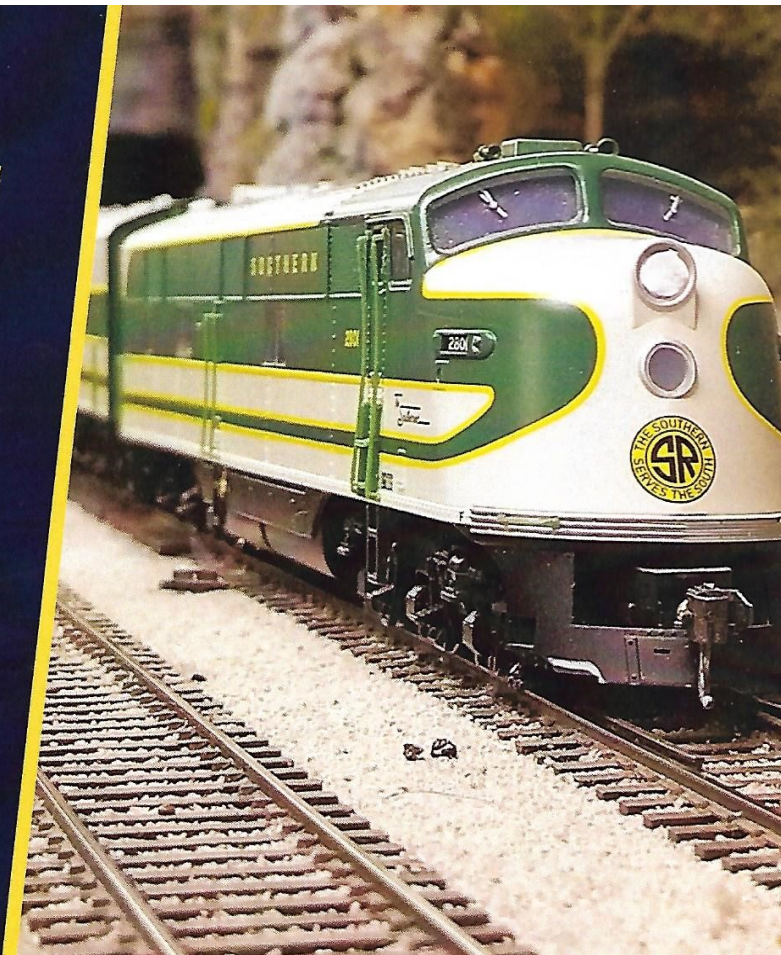
Children under 12 free

FREE Adjacent covered parking garage

Food booths will be open in the Mini-Dome

Lodging available at the Carnegie Hotel right across the street from the ETSU campus

For Information Call Roger Teinert 423-791-4937



2019 Madison Train Show

Friday, July 26
2:00 p.m. to 6:00 p.m.

Saturday, July 27
8:00 p.m. to 2:00 p.m.

- \$ 7 for adults
- \$ 3 for children 4-12
- Free for 3 and under

Discount \$1 per one adult with current ID: active duty military, police, fire, EMS & school teachers.

- Operating Model Trains
- Train Supply Vendors
- Exhibits
- Food
- Door Prizes!

For more information on the event or being a vendor please contact nathanbaker@comcast.net or call (615) 612-3324



701 Gallatin Pike S.
Madison, TN 37115
www.cityroadchapel.org/trainshow



City Road Chapel
United Methodist Church
Growing in Christ. Serving God's Love.

Ties and Rails Calendar

Tennessee Central Railway Museum, 220 Willow Street, Nashville, TN has numerous excursions throughout the year as listed in the calendar. Contact them at 615-241-0436 for specific information regarding any trip.

June 2019	Clean-up	Club	HO/N/Z Scales
6/1/19	Train Show	2425 S. Germantown Rd., Germantown, TN 38138	9:00 AM to 2:00 PM; \$5. adm.
6/3/19	Ops Session	Club	4:00 PM
6/6/19	Marketing Mtg.	Club	4:00 PM
6/8,9/19	Train Show	145 ML King Jr. Way, Gastonia NC 28052	9:00 AM to 4:00 PM (both days); \$5. adm.; 1 block from NS busy Mainline
6/10/19	BOD Meeting	Club	4:30 PM
6/10/19	Member Mtg.	Suite 112, Crossville Outlet Center	6:00 PM
6/14/19	Tour	Club	9:00 AM to 11:00 AM; tour group from First United Methodist Church
6/27/19	Marketing Mtg.	Club	4:00 PM for July 2019
6/29/19	Train Trip	220 Willow St., Nashville, TN	DelMonaco Winery Trip
July 2019	Clean-up	Club	O/G Scales
7/7-13/19	NMRA Conv.	Salt Lake City, UT	Website: www.nmra2019.org/
7/8/19	BOD Meeting	Club	4:30 PM
7/8/19	Member Mtg.	Suite 112, Crossville Outlet Center	6:00 PM
7/12-14/19	Train Show	Salt Lake City, UT	National Train Show
7/13/19	Train Trip	220 Willow St., Nashville, TN	Murder Mystery Trip
7/26,27/19	Train Show	701 Gallatin Pike S., Madison, TN	2:00 PM to 6:00 PM (Fri.) and 8:00 AM to 2:00 PM (Sat.); \$7. Adm.
Aug. 2019	Clean-up	Club	HO/N/Z Scales
8/8/19	Marketing Mtg.	Club	4:00 PM
8/10/19	Train Trip	220 Willow St., Nashville, TN	DelMonaco Winery Trip
8/12/19	Club Picnic	Camp Nakanawa	3:00 PM
8/31/19	Train Trip	220 Willow St., Nashville, TN	DelMonaco Winery Trip